

# DEFLEX® FUGENSYSTEME



4.3

## **BODENPROFILE - FELDBEGRENZUNGSFUGEN**

*floor profiles -  
field limitation joints*

# DEFLEX® 490/AL

Feldbegrenzungsugen / Field Limitation Joints



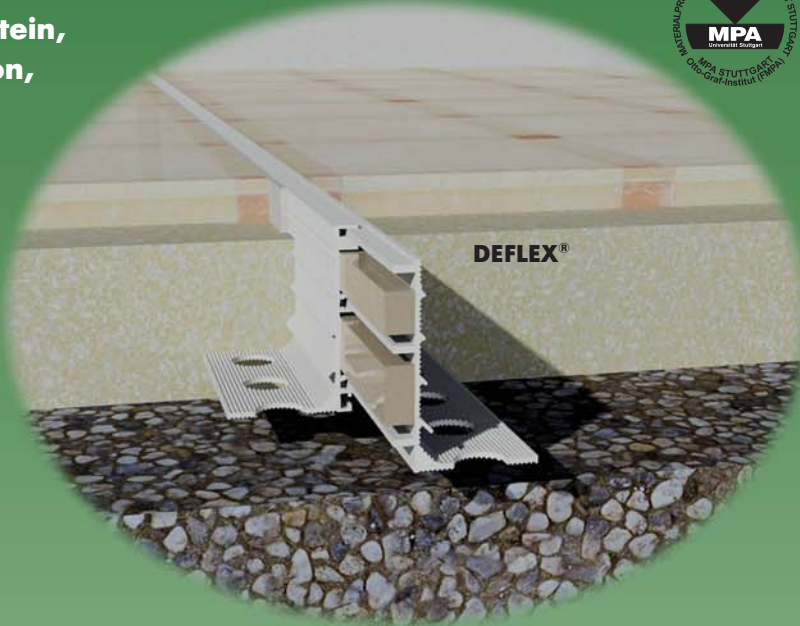
**Profil für alle Bodenbeläge (Estrich, Naturstein, Betonwerkstein etc.). Vollmetallkonstruktion, hoher Kantenschutz, gute Verbindung zum Mörtelbett durch abgestufte seitliche Aluminiumstege.**


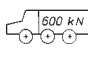
**Siehe auch Planungs- und Einbauhinweise.**

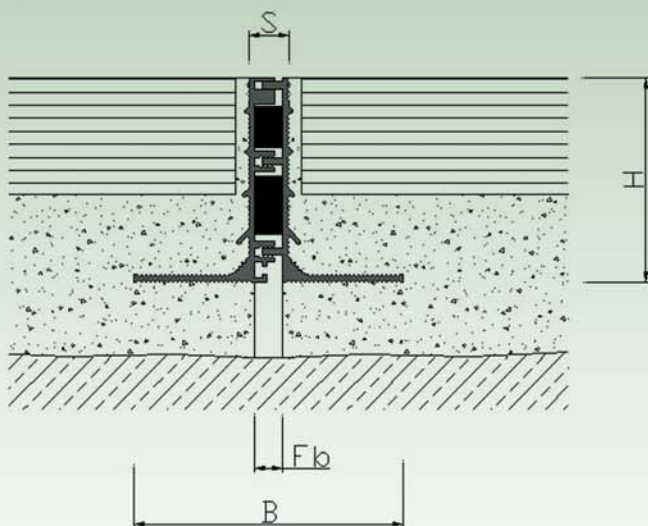
**Profile for all finishes (screed, natural stone, cast stone etc.).**

**All-Metal construction, high edge protection, attractive design, good connection to the mortar by graded aluminium side bars.**

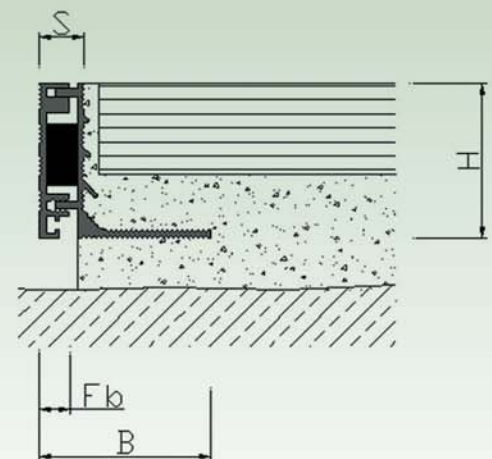
**See also tips for planning and installation.**



Typ/ type	490/AL
F <sub>b</sub> [mm] bis / up to	10
H [mm]	35/50
B [mm] ca. / approx.	67
S [mm] ca. / approx.	10
Bewegung / movement w [mm] horizontal	4 (±2)
Farbe / colours	natur / natural
Material / material	Aluminium / aluminium
Lieferlänge [m] standard length [m]	3
Belastbarkeit [kN] load-bearing capacity [kN]	 65  600



**490/AL**



**490/AL-R**

# DEFLEX® 494/MS


Feldbegrenzungsfugen / Field Limitation Joints

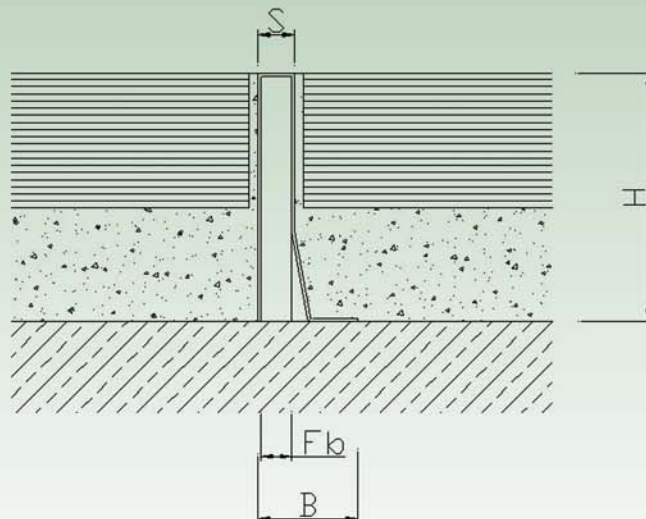


**Profil für alle Bodenbeläge (Estrich, Naturstein, Betonwerkstein etc.), speziell Anschluß Alt-/Neubau. Optisch ansprechend, gute Verbindung zum Mörtelbett durch gelochte Seitenkonstruktion.**

**Profile for all finishes (screed, natural stone, cast stone etc.), especially connection of old to new building. Attractive design, good connection to the mortar by perforated side parts.**

48

Typ/ type	494/MS
F <sub>b</sub> [mm] bis / up to	8
H [mm]	55
B [mm] ca. / approx.	25
S [mm] ca. / approx.	10
Bewegung / movement w [mm] horizontal	
Farbe / colours	Messing / brass
Material / material	Messing, Schaumstoff / brass, foam
Lieferlänge [m] standard length [m]	2
Belastbarkeit [kN] load-bearing capacity [kN]	



494/MS

# DEFLEX® 495/P

Feldbegrenzungsfugen / Field Limitation Joints


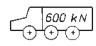
**Profil für alle Bodenbeläge (Estrich, Naturstein, Betonwerkstein etc.). Kombination aus Hart/WeichPVC mit oder ohne Edelstahlkappen.**

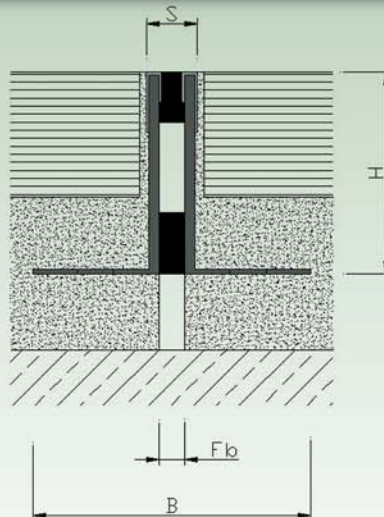
**Siehe auch Planungs- und Einbauhinweise.**

**Profile for all finishes (screed, natural stone, cast stone etc.). Combination of hard and soft PVC with or without stainless steel caps.**

**See also tips for planning and installation.**



Typ/ type	495/P	495/P-VA
F <sub>b</sub> [mm] bis / up to	5	5
H [mm]	30/45	40/50
B [mm] ca. / approx.	65	65
S [mm] ca. / approx.	9	10
Bewegung / movement w [mm] horizontal	2 (±1)	
Farbe der Einlage / insert colours	grau, schwarz und RAL-Farben / grey, black and RAL colours	
Material / material	PVC/ PVC	PVC, Edelstahl/ PVC, stainless steel
Lieferlänge [m] standard length [m]	4	
Belastbarkeit [kN] load-bearing capacity [kN]	 	



**495/P**

# DEFLEX® 496

Feldbegrenzungsfugen / Field Limitation Joints


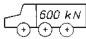


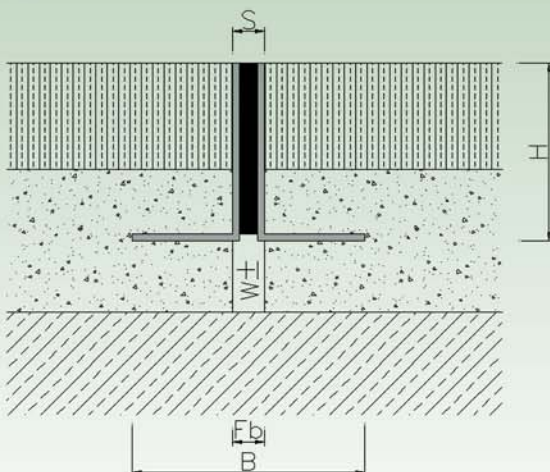
**Profil für alle Bodenbeläge (Estrich, Naturstein, Betonwerkstein etc.). Leichte Montage, hoher Kantenschutz, hohe Belastbarkeit.**

**Siehe auch Planungs- und Einbauhinweise.**

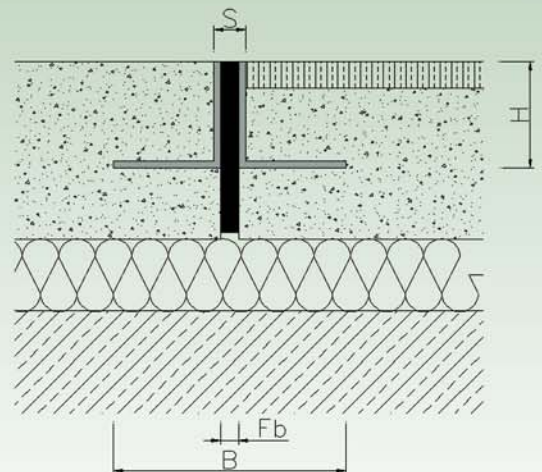
**Profile for all finishes (screed, natural stone, cast stone etc.). Easy to install, high edge protection, high load bearing capacity.**

**See also tips for planning and installation.**

Typ/ type	496/AL	496/E	496/MS
F <sub>b</sub> [mm] bis / up to	5	5	5
H [mm]	20 / 25 / 30 / 40 / 50 / 60		20 / 30 / 40 / 50
B [mm] ca. / approx.	65	65	65
S [mm] ca. / approx.	9	8	9
Bewegung / movement w [mm] horizontal	4 (±2)	4 (±2)	4 (±2)
Farbe der Einlage / insert colours	schwarz, grau / black, grey		
Material / material	Aluminium, Zellkautschuk aluminum, cellular rubber	Edelstahl, Zellkautschuk stainless steel, cellular rubber	Messing, Zellkautschuk brass, cellular rubber
Lieferlänge [m] standard length [m]	3	3	2,5
Belastbarkeit [kN] load-bearing capacity [kN]	 		



**496/AL**



**496/TD**

# DEFLEX® 497/AL & 497/ALE

Feldbegrenzungsfugen / Field Limitation Joints

**Profil für alle Bodenbeläge (Estrich, Naturstein, Betonwerkstein etc.). Glatte, auswechselbare Einlage, Trennung des Mörtelbettes durch höhenverstellbares Mittelteil, mit Edelstahlkappen lieferbar.**

**Siehe auch Planungs- und Einbauhinweise.**


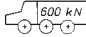
**Profile for all finishes (screed, natural stone, cast stone etc.). Smooth interchangeable insert, separation of the mortar bed by means of an adjustable central section, available also with stainless steel caps.**

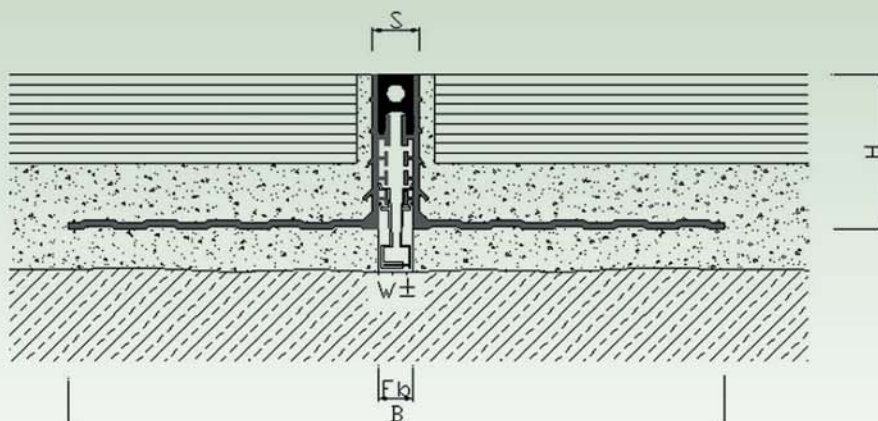
**See also tips for planning and installation.**



Geprüftes Brandverhalten gem. den Anforderungen an die Klasse E nach DIN EN 13501-1.

Tested fire behavior in accordance to the requirements of class E to DIN EN 13501-1.

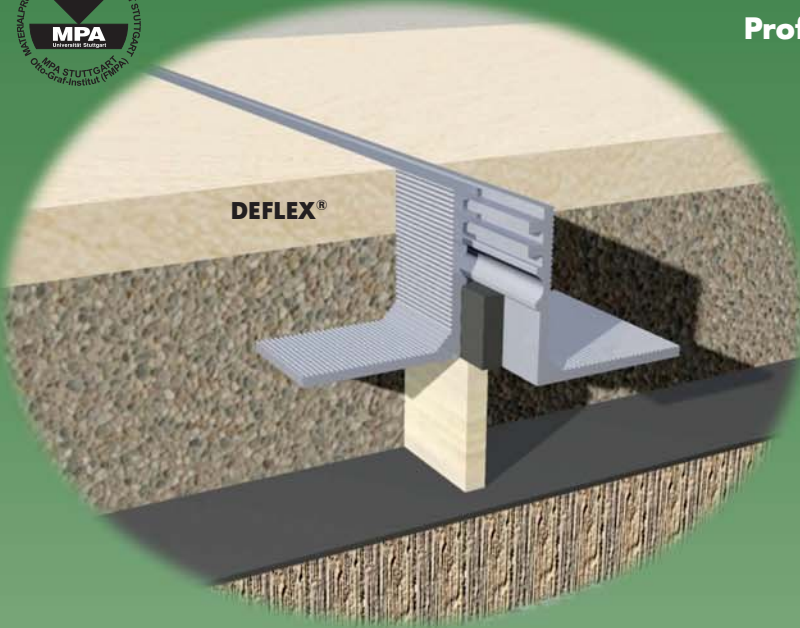
Typ/ type	497/AL	497/ALE
F <sub>b</sub> [mm] bis / up to	12	12
H [mm]	50/60	51/61
B [mm] ca. / approx.	212	212
S [mm] ca. / approx.	15	17
Bewegung / movement w [mm] horizontal	5 (±2,5)	
Farbe der Einlage / insert colours	grau, schwarz / grey, black	
Material / material	Aluminium, Nitriflex®, PVC aluminium, Nitriflex®, PVC	Aluminium, Nitriflex®, PVC, Edelstahl aluminium, Nitriflex®, PVC, stainless steel
Lieferlänge [m] standard length [m]	4	
Belastbarkeit [kN] load-bearing capacity [kN]	 	



**497/AL**

# DEFLEX® 498/AL

Feldbegrenzungsfugen / Field Limitation Joints



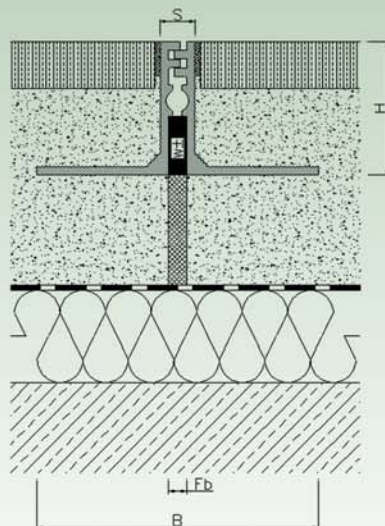
**Profil für alle Bodenbeläge (Estrich, Naturstein, Betonwerkstein etc.). Hohe Belastbarkeit, optisch ansprechend.**

**Siehe auch Planungs- und Einbauhinweise.**

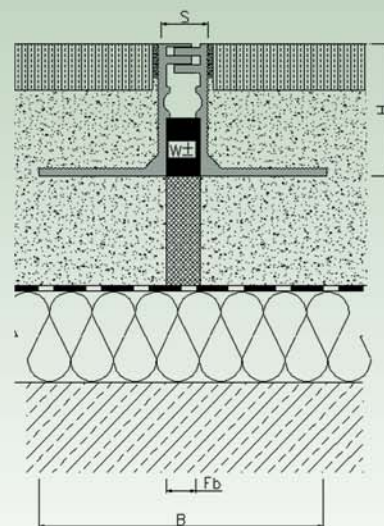
**Profile for all finishes (screed, natural stone, cast stone etc.). High load bearing capacity, attractive design.**

**See also tips for planning and installation.**

Typ/ type	498/AL-009	498/AL-015
F <sub>b</sub> [mm] bis / up to	9	15
H [mm]	60	60
B [mm] ca. / approx.	150	158
S [mm] ca. / approx.	16	24
Bewegung / movement w [mm] horizontal	5 (±2,5)	8 (±4)
Farbe / colours	natur / natural	
Material / material	Aluminium, Zellkautschuk / aluminium, cellular rubber	
Lieferlänge [m] standard length [m]	4	
Belastbarkeit [kN] load-bearing capacity [kN]		



**498/AL-009**



**498/AL-015**

# DEFLEX® 498/E

Feldbegrenzungsfugen / Field Limitation Joints


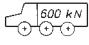
Profil für alle Bodenbeläge (Estrich, Naturstein, Betonwerkstein etc.). Hohe Belastbarkeit, optisch ansprechend.

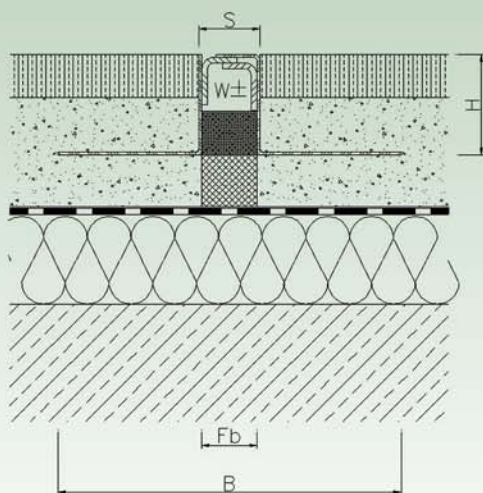
Siehe auch Planungs- und Einbauhinweise.

Profile for all finishes (screed, natural stone, cast stone etc.). High load bearing capacity, attractive design.

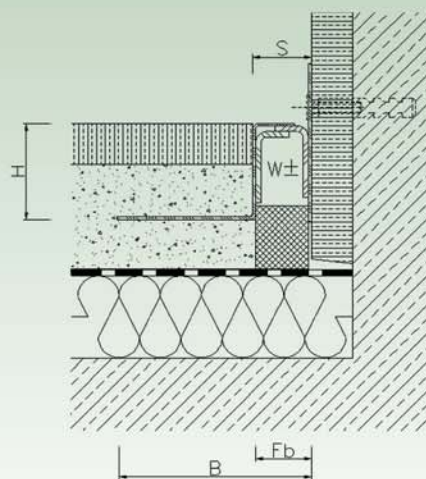
See also tips for planning and installation.



Typ/ type	498/E
F <sub>b</sub> [mm] bis / up to	10
H [mm]	30 / 40 / 50 / 60
B [mm] ca. / approx.	70
S [mm] ca. / approx.	15
Bewegung / movement w [mm] horizontal	5 (±2,5)
Farbe / colours	natur / natural
Material / material	Edelstahl, Zellkautschuk / stainless steel, cellular rubber
Lieferlänge [m] standard length [m]	4
Belastbarkeit [kN] load-bearing capacity [kN]	 



498/E

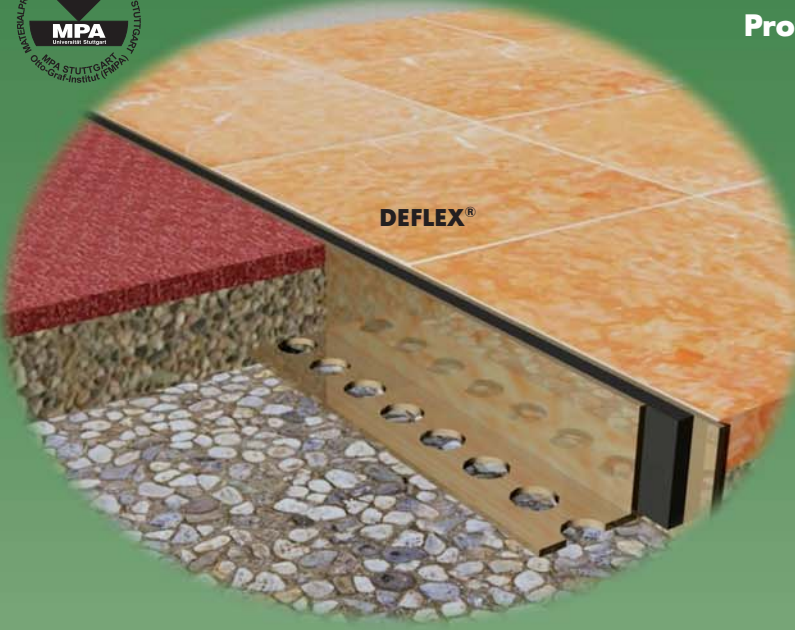


E 498/E



# DEFLEX® 710/B

## Feldbegrenzungsfugen / Field Limitation Joints



**Profil für alle Bodenbeläge (Estrich, Naturstein, Betonwerkstein etc.). Hohe Belastbarkeit, hohe Abriebfestigkeit.**

**Profile for all finishes (screed, natural stone, cast stone etc.). High load bearing capacity, high abrasion resistance.**



**See also tips for planning and installation.**

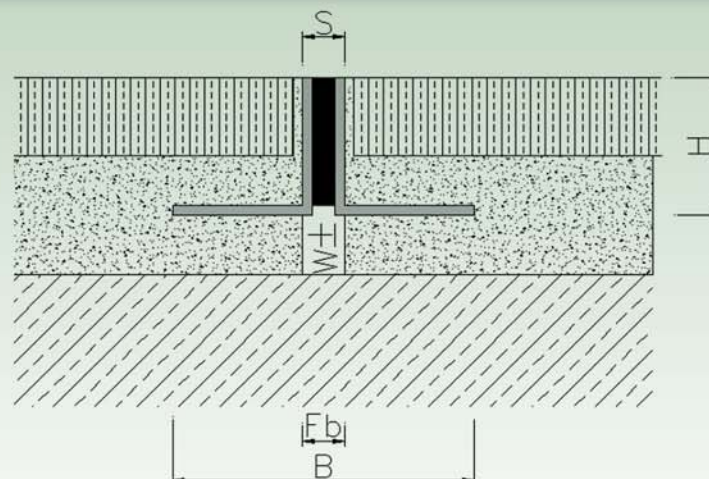
Geprüftes Brandverhalten gem. den Anforderungen an die Klasse E nach DIN EN 13501-1.

Tested fire behavior in accordance to the requirements of class E to DIN EN 13501-1.



54

Typ/ type	710/B-AL	710/B-VA	710/B-MS
F <sub>b</sub> [mm] bis / up to	5 (10)	5 (10)	5 (10)
H [mm]	20 / 25 / 30 / 40 / 50 / 60		20 / 25 / 30 / 40 / 50
B [mm] ca. / approx.	65 (70)		
S [mm] ca. / approx.	9 (14)		
Bewegung / movement w [mm] horizontal	2 (±1)		
Farbe der Einlage / insert colours	schwarz, grau / black, grey		
Material / material	Aluminium, Nitriflex® aluminum, Nitriflex®	Edelstahl, Nitriflex® stainless steel, Nitriflex®	Messing, Nitriflex® brass, Nitriflex®
Lieferlänge [m] standard length [m]	3	3	2,5
Belastbarkeit [kN] load-bearing capacity [kN]	 		



**710/B-MS**

# DEFLEX® 710/E

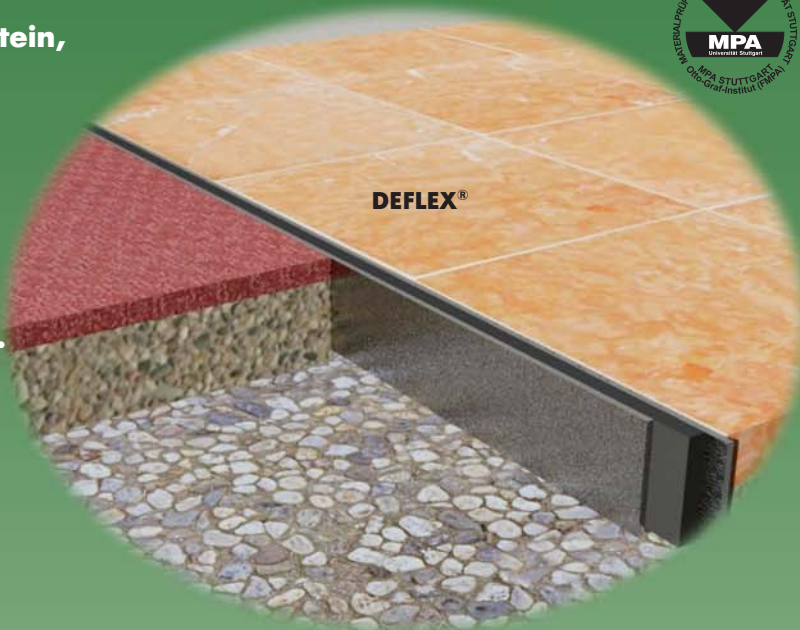
Feldbegrenzungsfugen / Field Limitation Joints

Profil für alle Bodenbeläge (Estrich, Naturstein, Betonwerkstein etc.). Hohe Belastbarkeit, hohe Abriebfestigkeit.

Siehe auch Planungs- und Einbauhinweise.



Profile for all finishes (screed, natural stone, cast stone etc.). High load bearing capacity, high abrasion resistance.

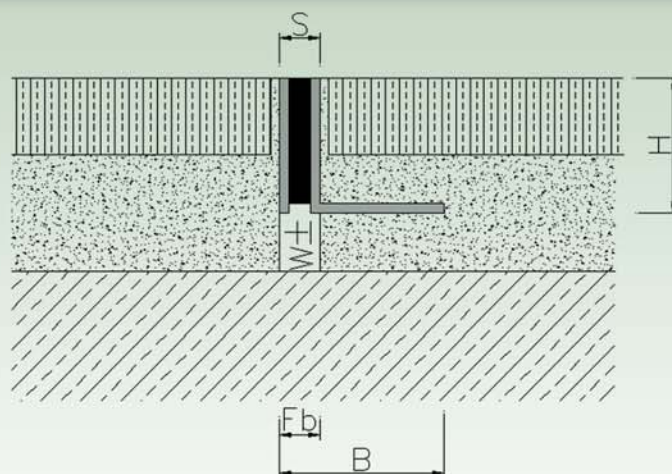
See also tips for planning and installation.



Geprüftes Brandverhalten gem. den Anforderungen an die Klasse E nach DIN EN 13501-1.

Tested fire behavior in accordance to the requirements of class E to DIN EN 13501-1.

Typ/ type	710/E-AL	710/E-VA	710/E-MS
F <sub>b</sub> [mm] bis / up to	5 (10)	5 (10)	5 (10)
H [mm]	20 / 25 / 30 / 40 / 50 / 60		20 / 25 / 30 / 40 / 50
B [mm] ca. / approx.	35 (40)		
S [mm] ca. / approx.	9 (14)		
Bewegung / movement w [mm] horizontal	2 (±1)		
Farbe der Einlage / insert colours	schwarz, grau und RAL-Farben / black, grey and RAL colours		
Material / material	Aluminium, Nitriflex® aluminum, Nitriflex®	Edelstahl, Nitriflex® stainless steel, Nitriflex®	Messing, Nitriflex® brass, Nitriflex®
Lieferlänge [m] standard length [m]	3	3	2,5
Belastbarkeit [kN] load-bearing capacity [kN]	 65		 600



710/E-VA

# DEFLEX® 710

Feldbegrenzungsfugen / Field Limitation Joints



**Profil für alle Bodenbeläge (Estrich, Naturstein, Betonwerkstein etc.). Hohe Belastbarkeit, hohe Abriebfestigkeit.**

**Siehe auch Planungs- und Einbauhinweise.**

**Profile for all finishes (screed, natural stone, cast stone etc.). High load bearing capacity, high abrasion resistance.**

**See also tips for planning and installation.**

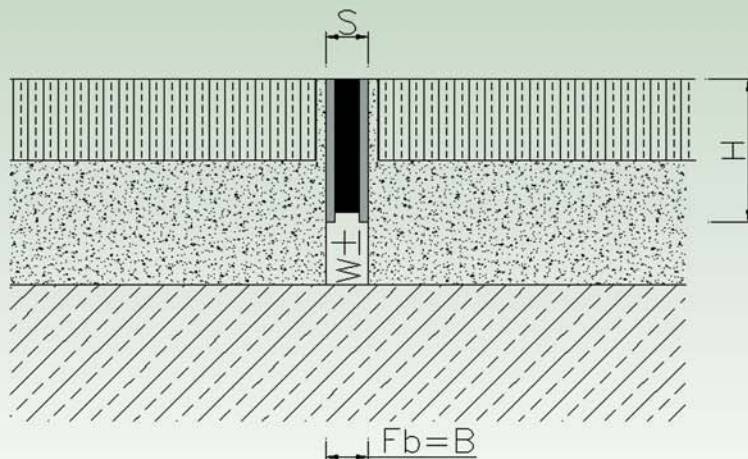
Geprüftes Brandverhalten gem. den Anforderungen an die Klasse E nach DIN EN 13501-1.

Tested fire behavior in accordance to the requirements of class E to DIN EN 13501-1.



56

Typ/ type	710-AL	710-VA	710-MS
F <sub>b</sub> [mm] bis / up to	5 (10)	5 (10)	5 (10)
H [mm]	20 / 25 / 30 / 40 / 50 / 60		
B [mm] ca. / approx.	9 (14)		
S [mm] ca. / approx.	9 (14)		
Bewegung / movement w [mm] horizontal	2 (±1)		
Farbe der Einlage / insert colours	schwarz, grau und RAL-Farben / black, grey and RAL colours		
Material / material	Aluminium, Nitriflex® aluminum, Nitriflex®	Edelstahl, Nitriflex® stainless steel, Nitriflex®	Messing, Nitriflex® brass, Nitriflex®
Lieferlänge [m] standard length [m]	3	3	2,5
Belastbarkeit [kN] load-bearing capacity [kN]			



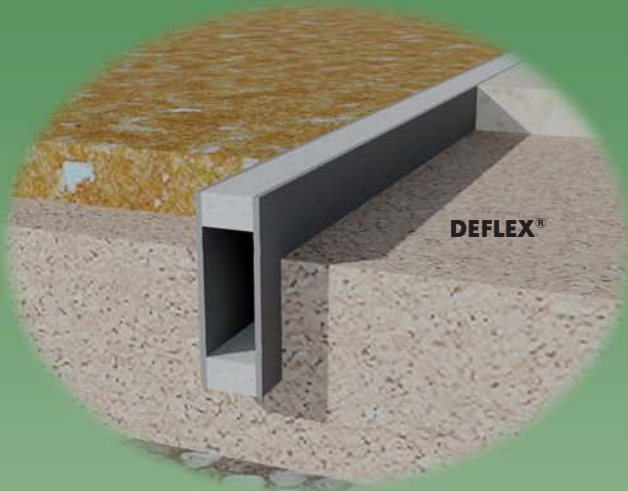
710-AL

# DEFLEX® 630/P & 640/P

Feldbegrenzungsfugen / Field Limitation Joints

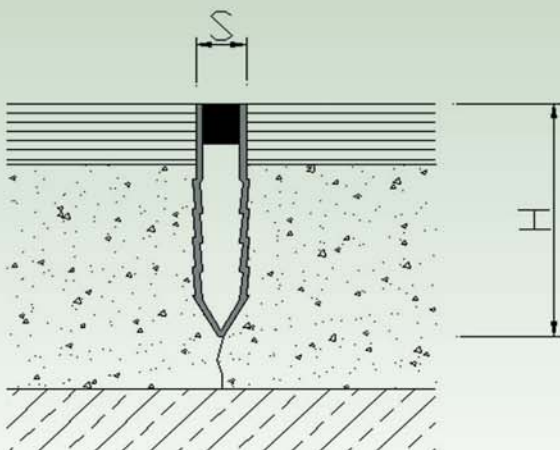
**Profil für Bodenbeläge mit geringen Belastungen.  
Kombination aus Hart/Weich-PVC, elastisches Mittelteil  
aus Weich-PVC.**

**Profile for all finishes and light traffic.  
Combination of hard and soft PVC, elastic middle  
part of soft PVC.**

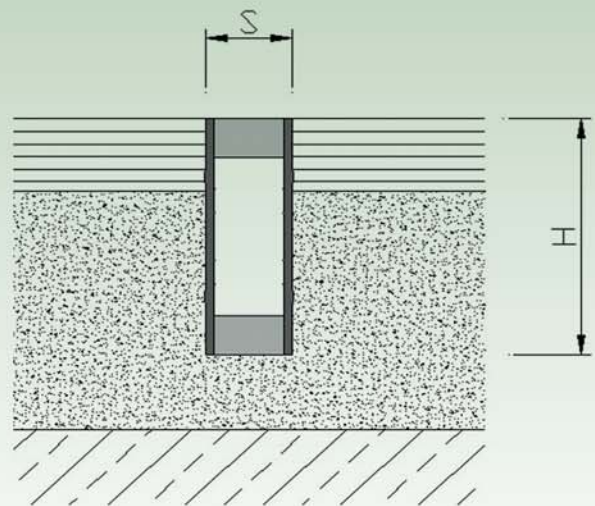


Typ/ type	630/P	640/P
F <sub>b</sub> [mm] bis / up to	8	10
H [mm]	25/30/35/40/50/65	30/40/50/60
B [mm] ca. / approx.	8	10
S [mm] ca. / approx.	8	10
Bewegung / movement w [mm] horizontal	2 (±1)	2 (±1)
Farbe / colours	grau und RAL-Farben / grey and RAL colours	
Material / material	H-PVC, W-PVC / R-PVC, S-PVC	
Lieferlänge [m] standard length [m]	2,50	
Belastbarkeit [kN] load-bearing capacity [kN]		

57



630/P



640/P

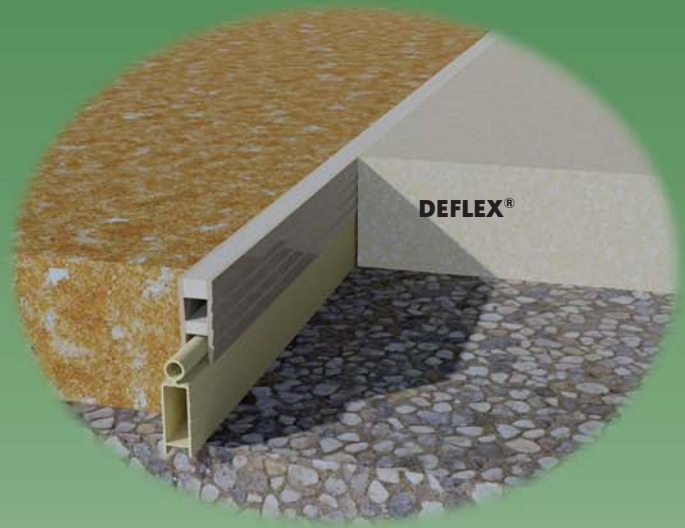
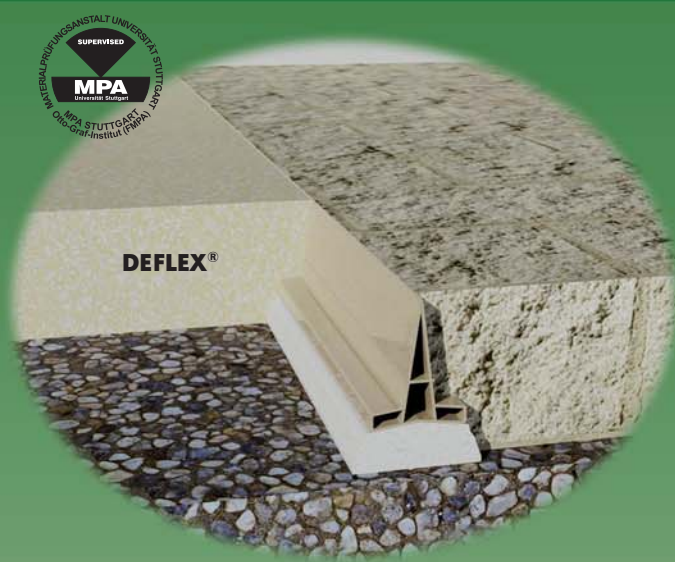
# DEFLEX® 690/P & 700/P

Feldbegrenzungsfugen / Field Limitation Joints



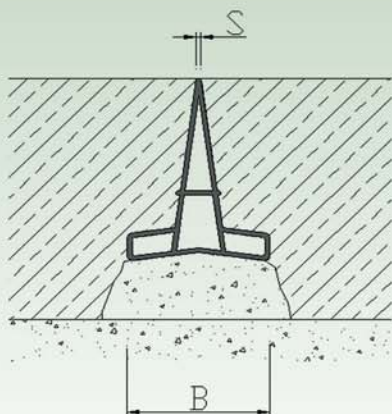
**Profil für Betonböden und Estriche.  
Leichter Einbau, hohe Belastbarkeit.**

**Profile for concrete floors and screed works.  
Easy to install, high load bearing capacity.**

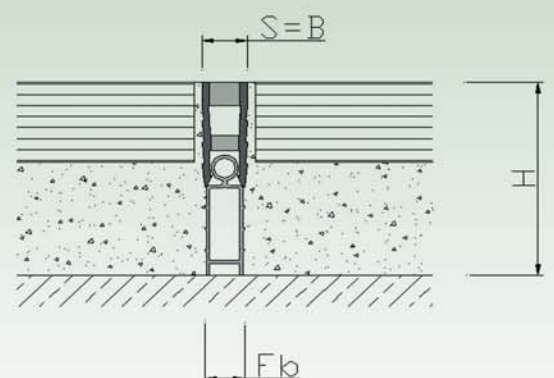


58

Typ/ type	690/P	700/P-1
F <sub>b</sub> [mm] bis / up to	0	10
H [mm]	40/50/80/125	45
B [mm] ca. / approx.	30/35/60/70	10
S [mm] ca. / approx.	1,5	10
Bewegung / movement w [mm] horizontal		2 (±1)
Farbe / colours	grau, beige / grey, beige	grau und RAL-Farben/ grey and RAL colours
Material / materia	PVC/ PVC	PVC/ PVC
Lieferlänge [m] standard length [m]	2,5/5	2,5
Belastbarkeit [kN] load-bearing capacity [kN]		



690/P



700/P



# DEFLEX®-FUGENSYSTEME GmbH

EINSTEINSTRASSE 13 · D-46325 BORKEN/GERMANY  
TELEFON 00 49/28 61/9 24 41-0 · TELEFAX 00 49/28 61/9 24 41-50  
[www.deflex-fugensysteme.de](http://www.deflex-fugensysteme.de) · email: [info@deflex-fugensysteme.de](mailto:info@deflex-fugensysteme.de)